

Innovative Fitting for Large Diameter PEX & PEX/AL/PEX pipe



Togglelit

PAT. Pending

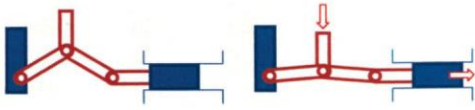
FIRST IN THE WORLD : TOGGLE METHOD FITTING



COCOMECH

Made in Japan

Toglit's Unique Technology



New System Combination

MECHFit

For 16 to 32mm
PEX & PEX/AL/PEX pipe



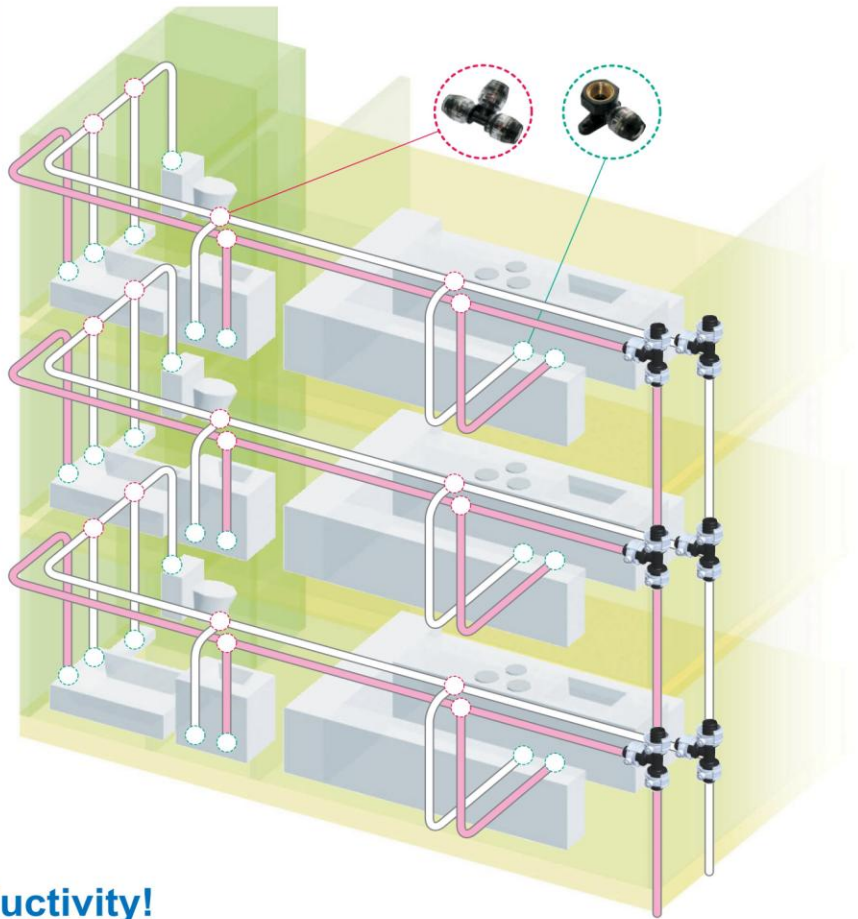
Toglit

Over 40mm
PEX & PEX/AL/PEX pipe

It is first in the world using "the toggle method" for plumbing joints! Generally, "the toggle mechanism" is one of the linking methods to generate the multiplicable force by small force. COCOMECH has established a method to squeeze the pipe by this mechanism, which enables the larger size piping work extremely fast and reliable! Especially installing with a Power tool and a bit, EASY INSTALLATION and USER-FRIENDLINESS WORKS will be assured.

A unique combination system with MECHFit for 16-32mm pipes & Toglit for over 40mm pipe can enhance the Workability and High Productivity that directly link to TIME-SAVING and COST REDUCTION.

Expand the Coverage of piping by COCOMECH's High Quality Fittings!!



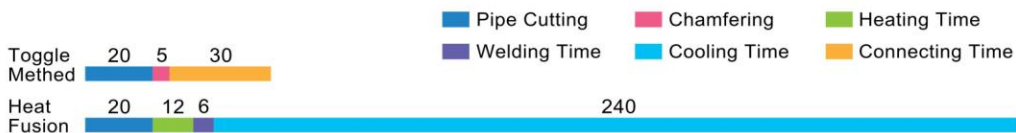
Application image for Hot & Cold water supply

40mm pipe and Toglit expand the coverage. The piping with Toglit for Riser pipe (or for the beginning area of horizontal line) and MECHFit for branch to each faucets make the perfect piping under higher productivity and quality.

Actualize the High Productivity!

One connection requires less than 1 minutes with 1 person! Of course No special tool required. Using an impact wrench makes the connection much faster. Less time, Less workers but Higher efficiency!! It must give you a profit more than imagined.

Necessary Time for One connection (sec.)



* PPR connection time is based on a manual.

Features of Toglit

■ Quick & Easy Installation without Special Tools

Just tightening the Nut with Common Wrench!

■ No restriction of Installing place

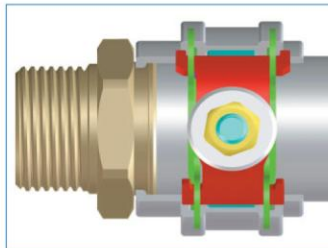
Easy to install even in a Narrow / Tight working area.

■ Availability of Vertical Approach

Assured and visible installation available.

■ Evenness of Squeezing force

Binding all around with equal force prevents the pipe wrinkles.



■ Center Action from the Forefront

Possible to install from Front side

■ Easy confirmation of Complete Installation

Bolt and Nut will be removed automatically after completion



■ Compact and Smooth Finish

Little bulge after completion with cover.

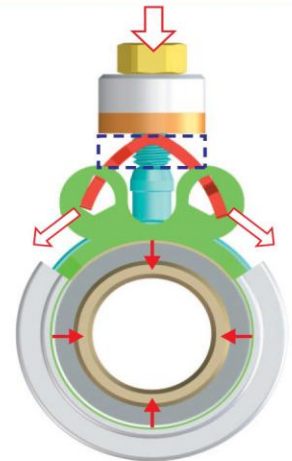
Four Simple Steps of Work

1. Nut tightening

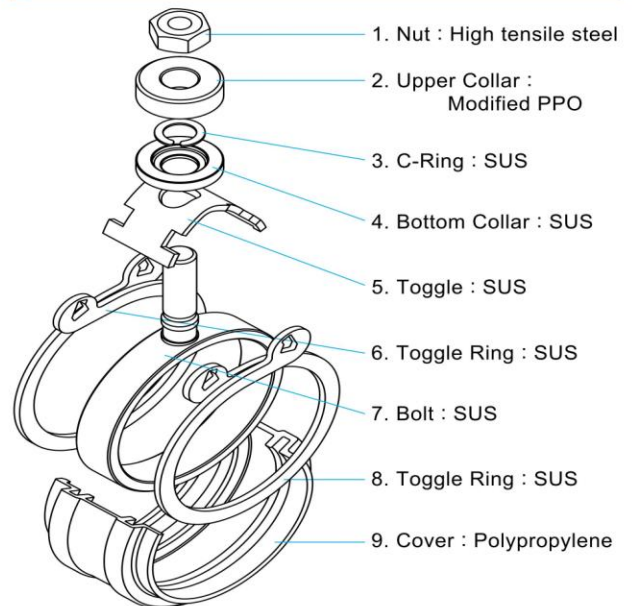
2. "TOGGLE" deformation

3. "TOGGLE RING" compression

4. Pipe squeezing



Specification of Toglit

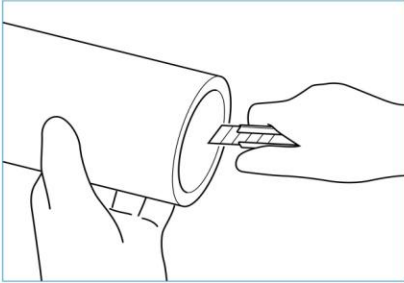


Proven performance under ISO 21003

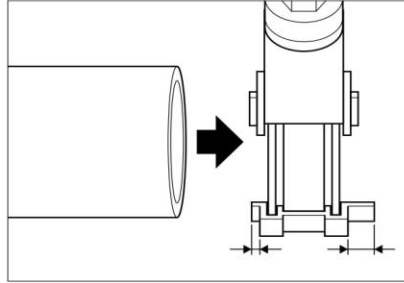
National Standard	ISO 21003	Internal Pressure	Pressure Multi	Temperature	Hour Cycle	Test Procedure	Judgment	Results
			12.5 Bar	95°C	1,000Hr	Continuous pressurized test for 1,000Hr at 95°C	No-Leakage	Pass
		Bending	33.9 Bar	20°C	1Hr Hold	Bending Radius : 5-time of ND	No-Leakage Find Burst	Pass
		Pull-Out		23 & 90°C	1Hr Hold	23°C=1.5F, 90°C=F	No-separation	Pass
		Thermal Cycle	10 Bar	23 & 95°C	5,000 Cycle	95°C×15Min → 20°C×15Min Cycling test for 5,000 Cycle	No-Leakage	Pass
		Pressure Cycle	15 Bar & 0.5 Bar	23°C	10,000 Cycle	15Bar → 0.5Bar Pulse pressure 30cycle/min.	No-Leakage	Pass
		Vacuum	-0.8 Bar Vacuum	23°C	1Hr Hold	Vacuum -0.8Bar 1Hr hold	Within 0.05Bar	Pass

Toglit Brief Installation Procedure

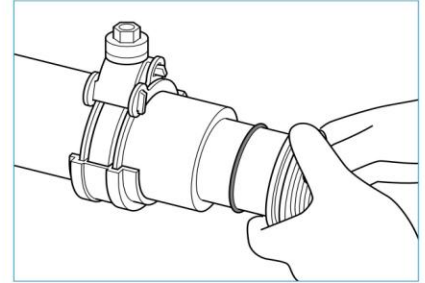
1. Pipe Chamfering



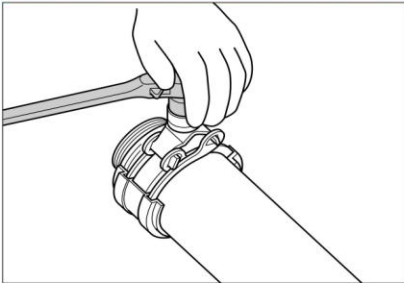
2. Inserting the fitting



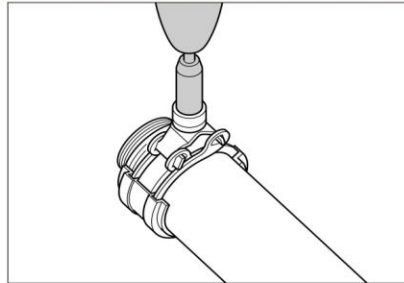
3. Inserting Nipple Body



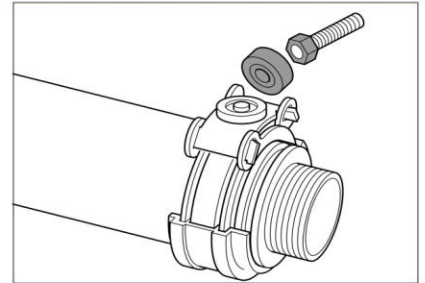
4. Nut tightening



By WRENCH or POWER TOOL



5. Completion



Line-ups

Super Engineering Plastic Model



Fig. 340
Elbow

Code	Size
0014	40



Fig. 341
Equal Tees

Code	Size
0014	40



Fig. 342
Equal Union

Code	Size
0014	40

Brass Model



Fig. 373
Fixed Fitting with Male Thread

Code	Size
1410	40×1"
1412	40×1'-1/4"



Fig. 378
Tee with Female Thread end

Code	Size
1410	40×1"
1412	40×1'-1/4"

Information in this document is subject to change without notice.

COCOMECH

HIGASHIO MECH CO.,LTD.

8-22, Kikusui-cho
Kawachinagano, Osaka, Japan
Tel : +81-721-53-2281
Fax : +81-721-53-2279
<http://www.mech.co.jp/>



ISO14001
Certificate No.
JQA-EM 5370



ISO9001
Certificate No.
JQA-2447



TPM Award of
Excellence The
1st Category